

Tree puzzle

Read each question.

Look at the drawing of the tree to help you.

Colour the answer in the grid.

There will be **six letters left over**, what do they spell?



Questions

1. What do we call the main body of the tree?
2. What is the name of the outer layer of the tree truck?
3. What part of the tree grows underground?
4. What is the part of the tree leaves grow from?
5. What do we call the green parts of a tree?

K	L	E	A	V	E	S
R	T	R	U	N	K	G
A	A	R		D	E	N
B	R	O	O	T	S	
B	R	A	N	C	H	

Clues

1. Begins with the letter 'T'.
2. Something a dog does.
3. Rhymes with 'boots'.
4. Six letter word rhymes with 'ranch'.
5. Starts with 'L' and ends in 'S'.

Left over letters



Garden kids

Dec 2021 - Jan 2022

Holiday activity booklet



Complete yourself as a garden explorer

a	b	c	d	e	f
g	h	i	j	k	l
m	n	o	p	q	r
s	t	u	v	w	x
		y	z		

↗
Colour the letters that spell your name.
Write your name here ↓

Finger and hand warm ups to get ready for the activities in this booklet.

Continue the pattern



Start at the ● and join the dots



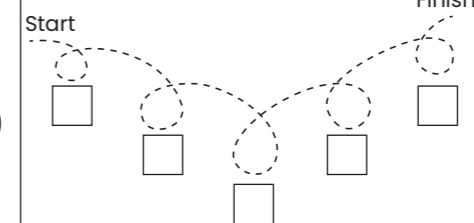
Trace over the X's



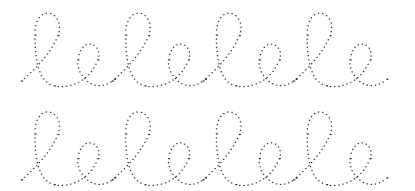
Fill this space with small and big circles



Trace over the line



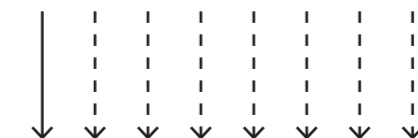
Trace over these lines



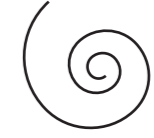
Draw a line inside this line



Connect the lines to make the arrows look like this.

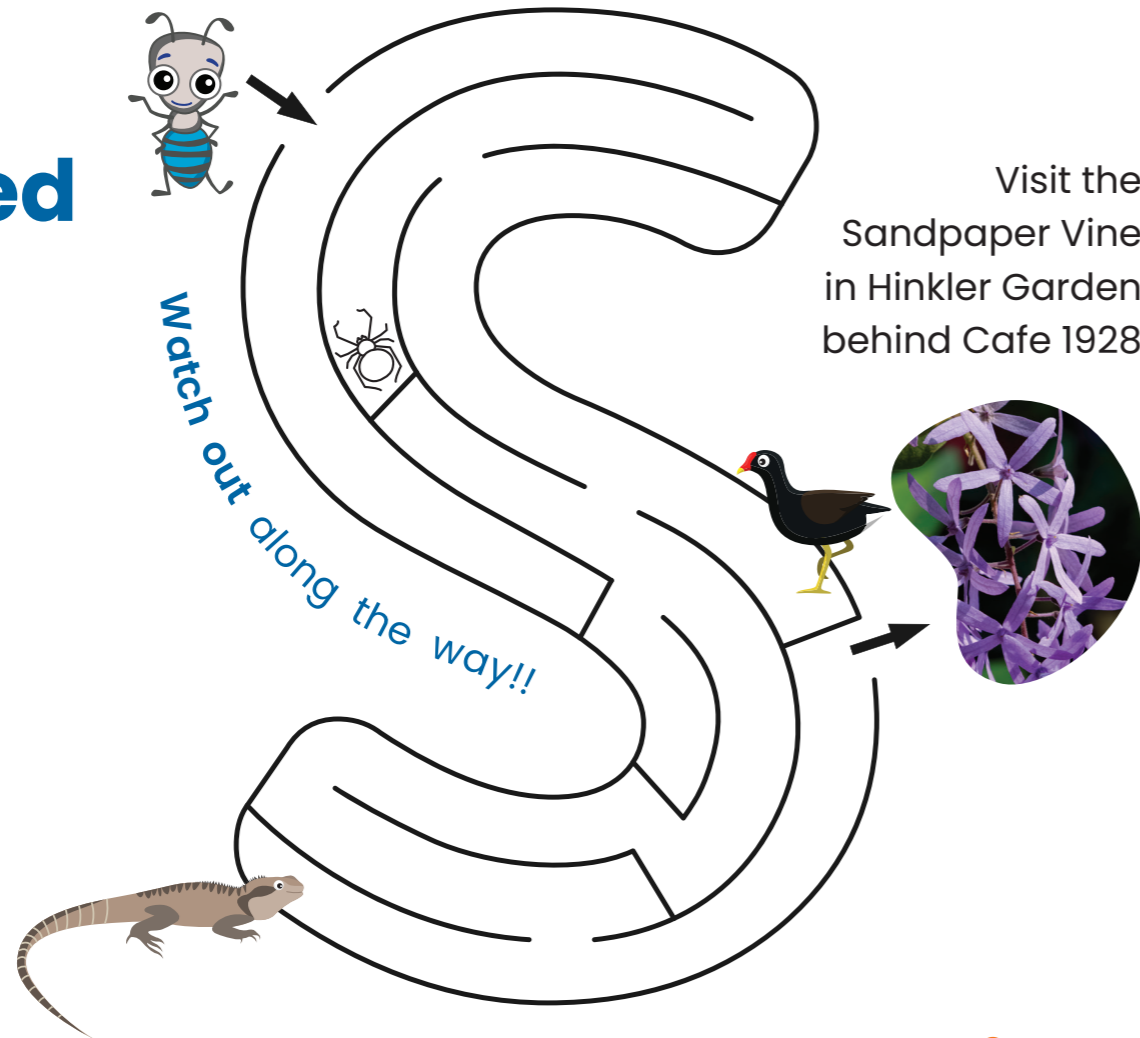


Draw two more spirals



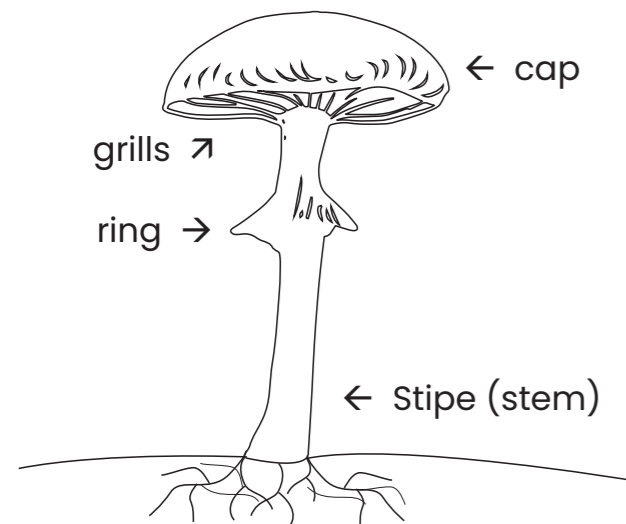
Help the Blue-banded bee

find its way to the Sandpaper Vine flower for a snack of nectar.

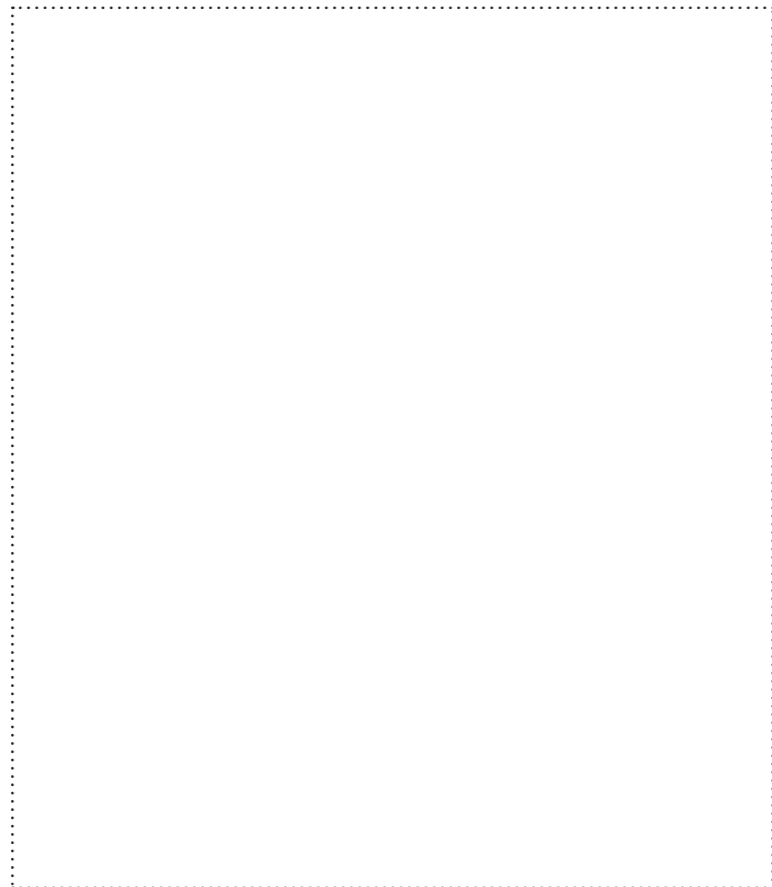


Design your own fungi ↓

Fungi are the planet's clean up crew breaking down dead animals and plants. They come in all shapes and sizes.



under the ground hyphae form a crisscrossed mat that looks like a cobweb called mycelium.

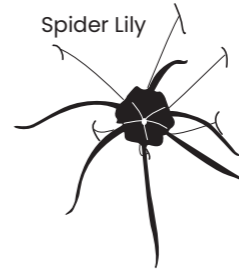


4

plants in the Gardens have animals in their names. Can you match them up?

1.

My seed pods are yellow and curly. I'm named after an animal that lives in the trees.



3.

My flowers are bright yellow and red. I'm named after a marine creature.



2.

My flowers look like the tail of an animal that rhymes with bat.



4.

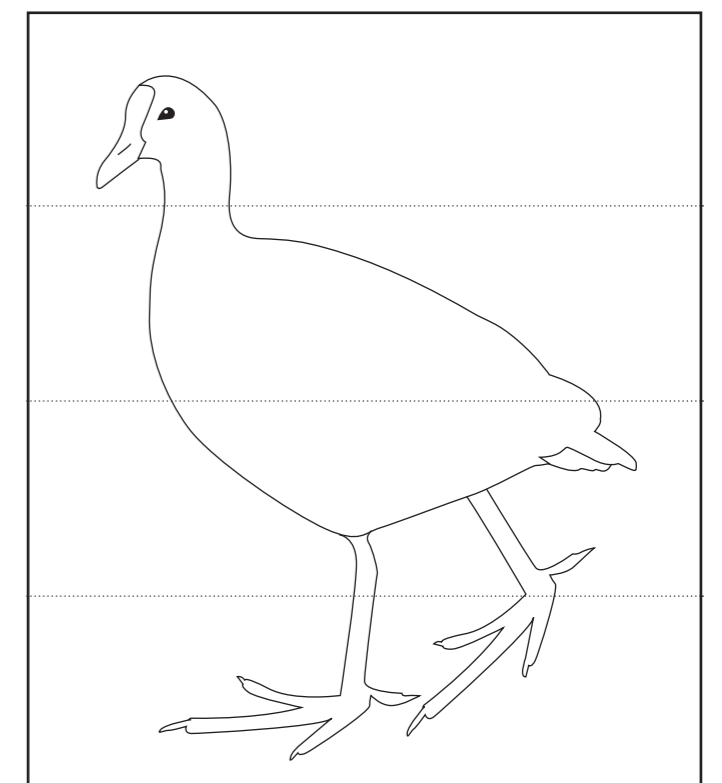
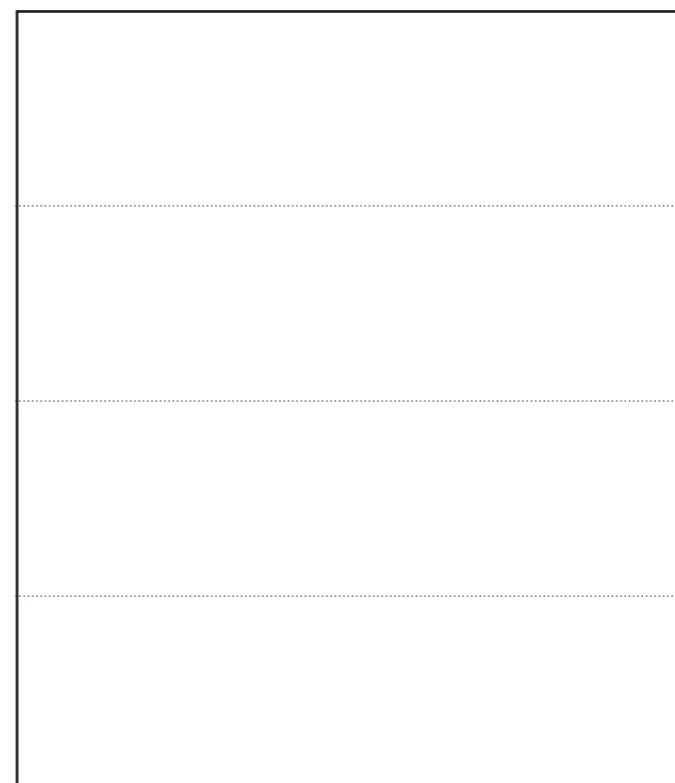
My flower petals are long and white and look like an animal with eight legs.



Have you spotted a **Dusky Moorhen** in the Gardens?

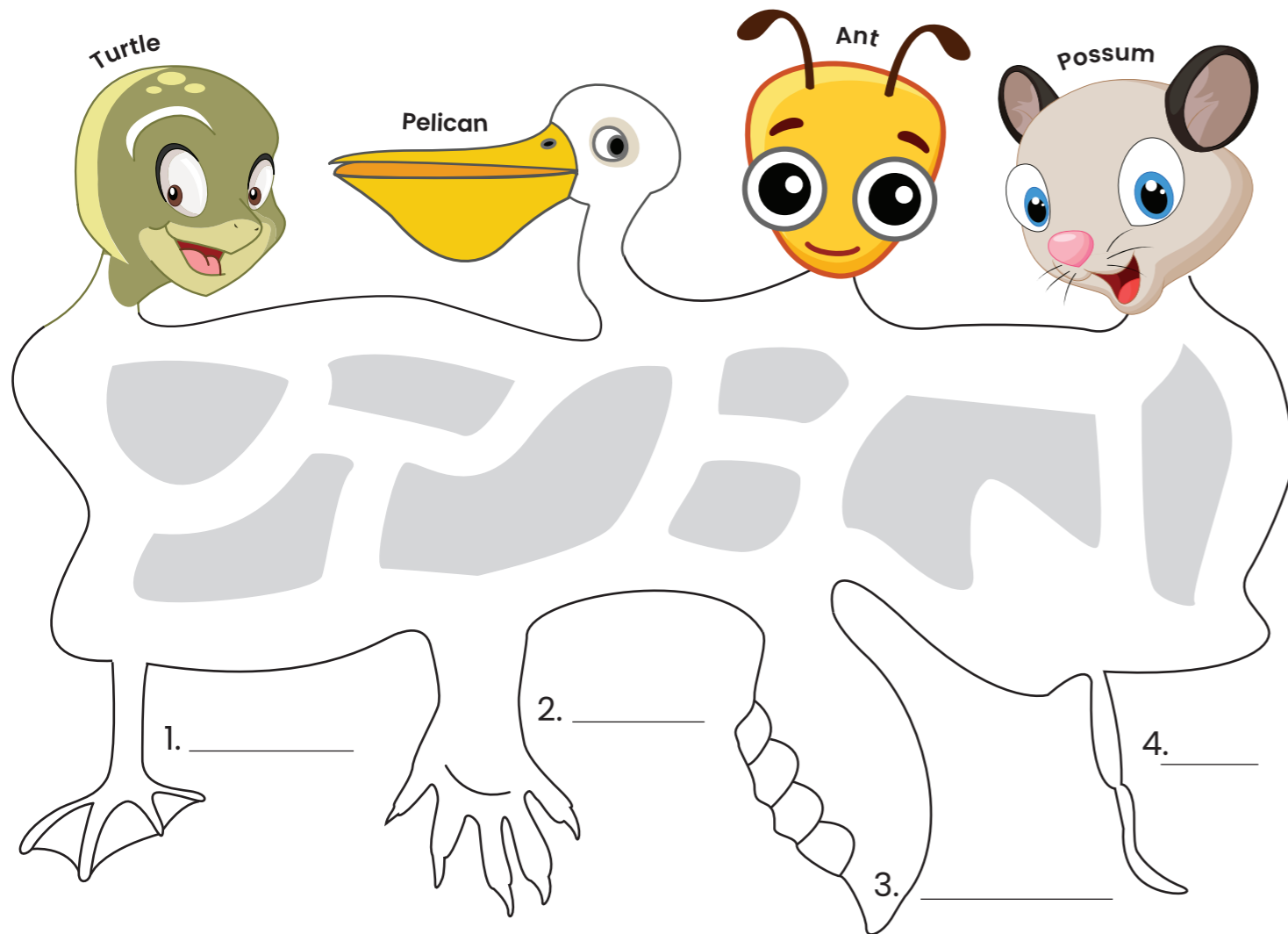
Look for a bird with a red bill with a yellow tip

↓ Copy a picture of the **Dusky Moorhen** into this box



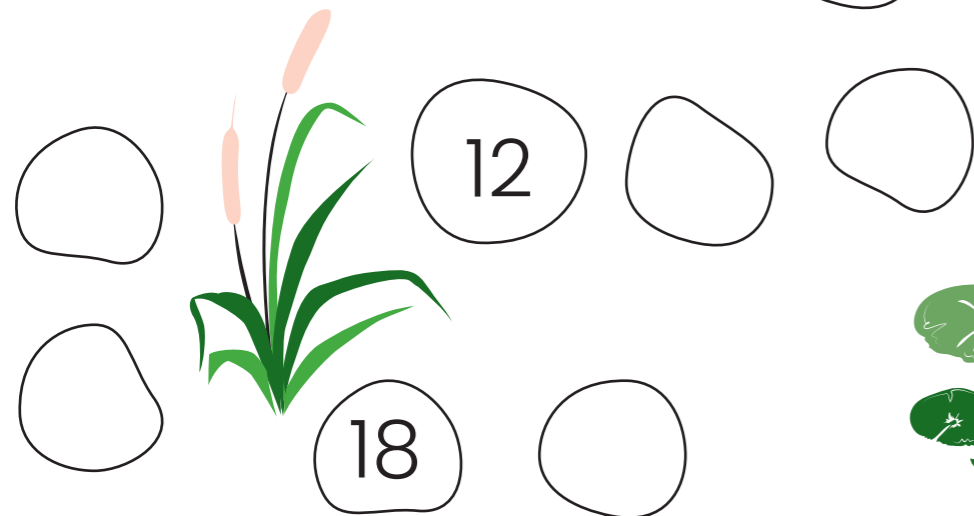
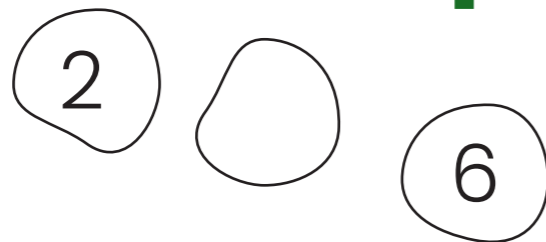
Match the feet

Draw a path to match the head to their foot.



Help the frog

jump across the rocks to get to the lake by counting in twos and writing your answers on the rocks.

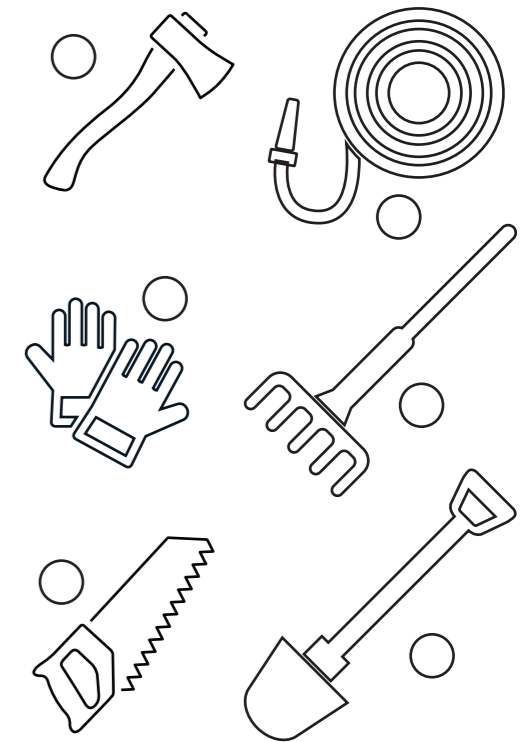


Gardening tools

The Botanic Gardens team use a lot of tools to look after the gardens. Can you find these six tools? Tick each one when you find its name in the box.

1. spade
2. saw
3. axe
4. rake
5. gloves
6. hose

G	B	D	J	N
L	H	O	S	E
O	E	X	A	U
V	R	I	W	F
E	R	A	K	E
S	P	A	D	E



How many fruits?

If a caterpillar eats **one fig on Monday**, **two starfruits on Wednesday** and **three fingerlimes on Saturday** in the Rare Fruit Tree Orchard, how many fruits will the caterpillar have eaten by the end of Sunday?



- Monday _____
- Tuesday _____
- Wednesday _____
- Thursday _____
- Friday _____
- Saturday _____
- Sunday _____

Draw or write your answers

←

TOTAL

Unscramble

Unscramble these words then use the **five letters** in the circles to solve the final word.

- N U S ○ □ □
- A T N ○ □ □
- K C D U □ □ □ ○
- F E A L ○ ○ □ □
- T A I R N □ □ □ □ □

Write the **five letters** in the circles here

What word does it spell?

They are made of water and rhyme with 'cakes'

Follow the dots

Connect the dots by following the numbers to complete the picture of a leaf



Need help?

Read the clues below

Clues

- I'm hot and bright and you'll find me in the sky.
- I'm small and have six legs and two antennae.
- I am a type of bird that loves the water.
- I grow on trees and come in all shapes and sizes.
- I have wheels and run along a track.

Mystery picture

Use the **colour chart** to colour the squares and reveal the mystery picture.

	1	2	3	4	5	6	7	8	9	10	11	12	13
A													
B													
C													
D													
E													
F													
G													
H													
I													
J													
K													
L													

Colour chart

(You can use four colours of your choice. Make sure you cross out the current colour and replace with your colour to save confusion. E.g. ~~RED~~ GREEN)

ORANGE

- C 10, 11
- D 10, 11, 12, 13
- E 9, 10, 11, 12

YELLOW

- F 2
- G 2, 3, 8
- H 3, 4, 5, 6, 7, 8
- I 4, 5, 6, 7

RED

- A 6, 7, 8, 9
- B 5, 6, 7, 8, 9, 10
- C 5, 6, 7, 9
- D 5, 6, 7, 8, 9
- E 1, 6, 7, 8
- F 1, 3, 4, 5, 7, 8, 9
- G 1, 4, 5, 6, 7, 9, 10
- H 1, 2, 9, 10, 11
- I 1, 2, 3, 8, 9, 10, 11
- J 2, 3, 4, 5, 6, 7, 8, 9, 10, 11
- K 3, 4, 5, 6, 7, 8, 9, 10

BLUE

- C 8
- L 1, 2, 3, 4, 5, 6, 7, 8, 9, 10, 11, 12, 13